



Eagle Express

Phone: 413-423-3326

<http://www.erving.com>

SCHOOL WEEKLY NEWSLETTER

GROUNDHOG EDITION

ERVING, MA

FEBRUARY 2, 2024



Monday, Feb 5

P.I.E.E meeting
7:00pm - virtual
Google Meet joining info

Video call link:

<https://meet.google.com/zkw-yixc-bfg>

Or dial: +1 402-961-1117
PIN: 487329463

Wednesday, Feb 7

Savings Makes "Cents"

Thursday, Feb 8

School Committee
Budget meeting
5:00pm at EES

Sunday, Feb 11

CNC Playgroup
10:00-11:30 am

Thursday, Feb 15

All School Sing
2:30 pm

We are approaching "that" time of year again and we have a tentative schedule for MCAS testing 2024.

Please try to avoid scheduling any appointments or vacations during the following dates.

Thank you for your cooperation.

ELA

Grade 6 - April 1 & April 4
Grade 5 - April 2 & April 5
Grade 4 - April 8 & April 11
Grade 3 - April 9 & April 12

MATH

Grade 6 - April 29 & May 2
Grade 5 - April 30 & May 3
Grade 4 - May 6 & May 9
Grade 3 - May 7 & May 10

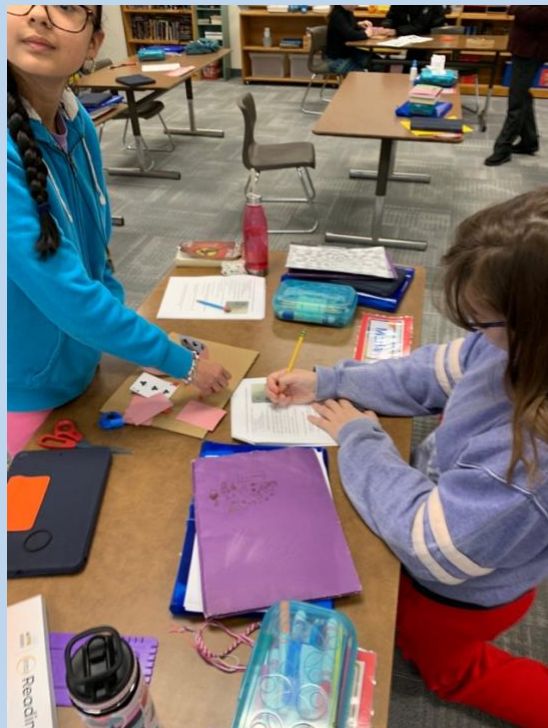
SCIENCE

Grade 5 - May 13 & May 16

6th Grade Engineers

In a hands-on approach, students worked together to build structures, using the scientific method of planning, creating (building), testing, and then analyzing, before repeating the cycle. The building materials were simple playing cards, along with small amounts of clay and tape.

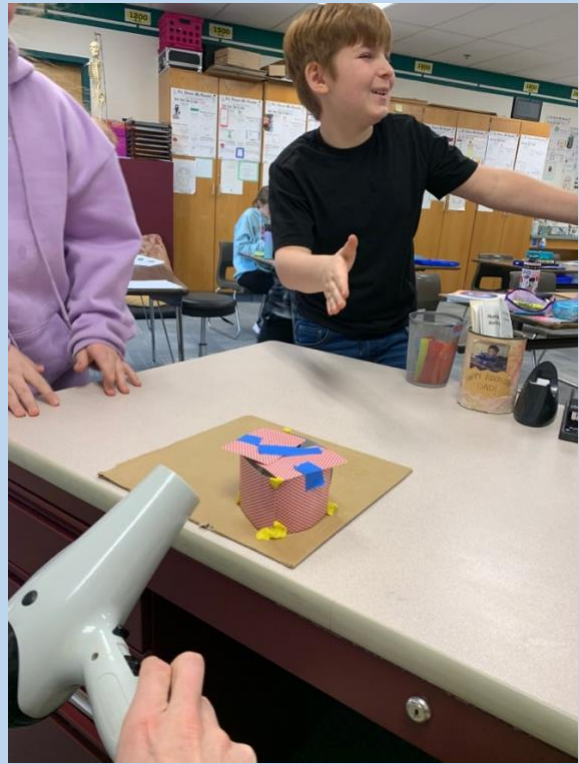
Students had fun as Mr. Burnett created hurricane winds (aka using a hair dryer to knock their “houses” over). Frankly, they enjoyed the destruction more than the challenge of building a home that didn’t fall apart. 😊



Setting the foundation.



Hurricane is coming!



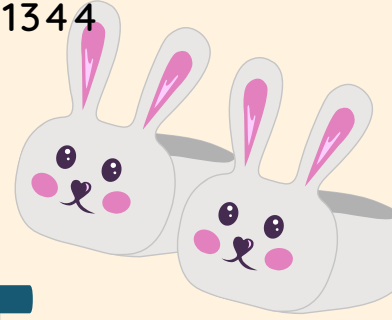
What Do You Love About Yourself?

As Valentine's Day approaches, many people reflect on those they care about and ways to communicate their love and appreciation for them. It can also be a time for self reflection to articulate what we love about ourselves.

EES community members are invited to share what they love about themselves by completing hearts that can be displayed in the school. The hearts can be found in the school lobby. Please return the completed hearts to the office, and they will be displayed somewhere in the school. Enjoy!



ERVING PUBLIC LIBRARY
2 CARE DRIVE, OFF ROUTE 63, ERVING, MA 01344



PJ STORYTIME

WITH U28 COMMUNITY NETWORK FOR CHILDREN

2nd Thursdays
6-6:45 pm

Our last remaining storytimes:

February 8: Let It Snow

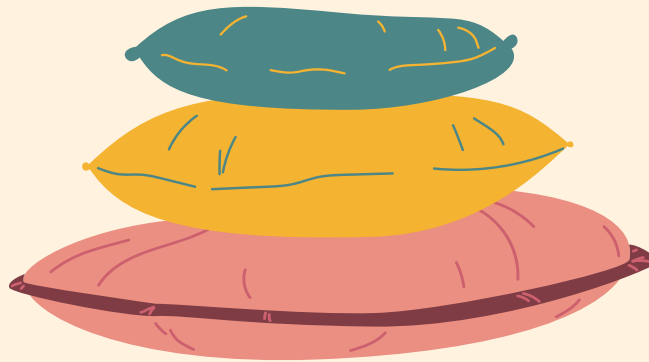
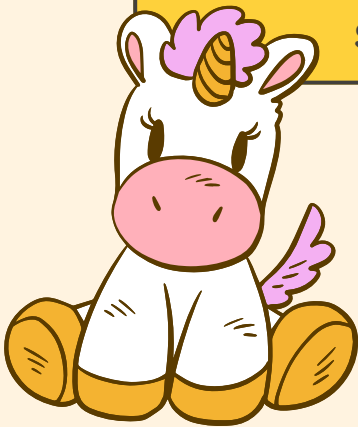
March 14: Teddy Bear Picnic

Registration
requested for
planning
purposes



Come join us in your favorite pajamas for an evening storytime! Young children and their families are welcome! Story themed-activities sponsored by CNC.

Use QR Code to Register or
[https://form.jotform.com/
231995324350154](https://form.jotform.com/231995324350154)



Contact the Erving Public Library or
CNC at budine@erving.com with any questions



THE UNION #28 COMMUNITY NETWORK FOR CHILDREN PROGRAM IS FUNDED BY THE COORDINATED FAMILY AND COMMUNITY ENGAGEMENT (CFCE) GRANT AWARDED TO THE UNION #28 SCHOOLS BY THE MASSACHUSETTS DEPARTMENT OF EARLY EDUCATION AND CARE, AND DONATIONS FROM THE COMMUNITY.



**ERVING
RECREATION**

SNOW TUBING

COMMUNITY DAY



**SPACE IS LIMITED
REGISTER EARLY!**

**FRIDAY
FEB. 23**

**11:30 AM - 1 PM
BERKSHIRE EAST
CHARLEMONT, MA**

**MINIMUM RIDER HEIGHT 42 IN.
CHILDREN MUST BE WITH AN ADULT**

**ERVING RESIDENTS \$13 (\$15 OFF REGULAR TICKET)
NON-RESIDENTS \$23 (\$5 OFF REG. TICKET)**

REGISTRATION IS NOW OPEN

<http://ervingma.myrec.com>

THIS EVENT MADE POSSIBLE THANKS TO ERVING TAX-PAYERS. THANK YOU.



Erving Elementary School
Preschool and Kindergarten
Registration

Erving Elementary School is beginning to register preschool and kindergarten aged students for the 2024-2025 school year.

Preschool: If you have a child who will be 3 or 4 years old by September 1, 2024 and you live in the town of Erving, they are eligible to attend preschool at Erving Elementary School.

Erving Elementary offers a full day preschool program - Monday, Tuesday, Thursday, Friday 8:50-3:00 and Wednesday 8:50-1:00. *First Year (3-yr old program) students do NOT attend preschool on Wednesday. Preschool is a tuition-based program per the Erving School Committee. We charge \$20 per day for preschool tuition.

Kindergarten: If you have a child who will be 5 years old by September 1, 2024, and you live in the town of Erving, he/she is eligible to attend kindergarten at Erving Elementary School.

**Students currently attending Erving Elementary School are automatically enrolled for their next school year.

All registration packets are due by March 11, 2024

Please contact the school at 413 423-3326 with any questions and to obtain a registration packet.